

CUMBERNAULD community enterprise centre



COLLECTIVE ARCHITECTURE



This book is part of a series documenting a work in progress by Collective Architecture in June 2015.

Each book has been specially made for the 'HOME from HOME' exhibition held in Brixton, London

between 18/06/15 and 21/06/15 as part of the London Festival of Architecture Open Studios.





CUMBERNAULD COMMUNITY ENTERPRISE CENTRE Cumbernauld, Scotland





Cumbernauld - Rural village to visionary new town

The proposed project provides a new Community Centre and business facility for the Social Enterprise and Small Business sectors in Cumbernauld. Utilising the site of the existing Muirfield Community Facility the proposed building seeks to create a strong presence within Cumbernauld Town Centre. It forms a new civic realm and parkland that aim to serve the wider Cumbernauld community and enhance the town centre.



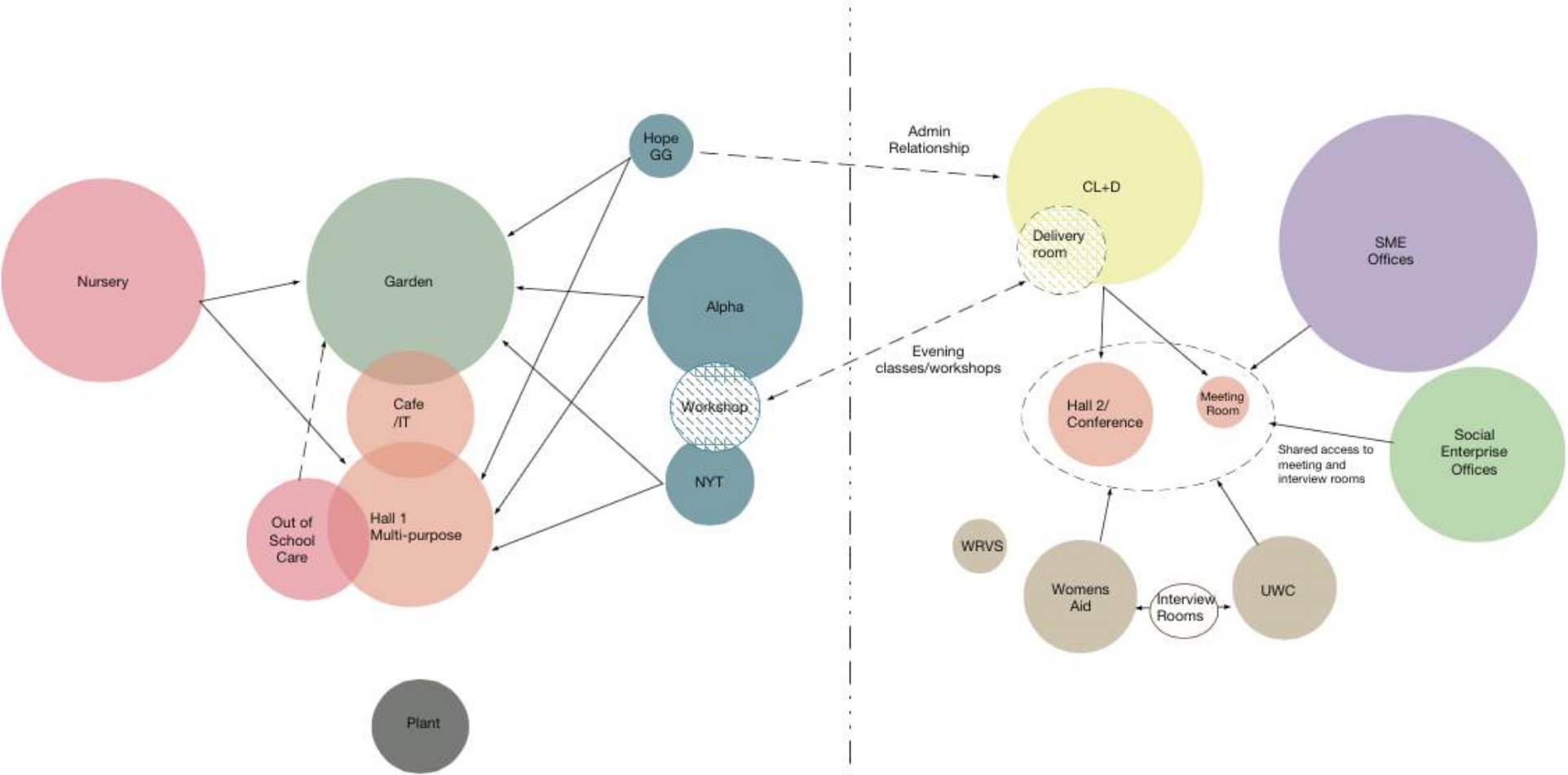


Existing Town Centre

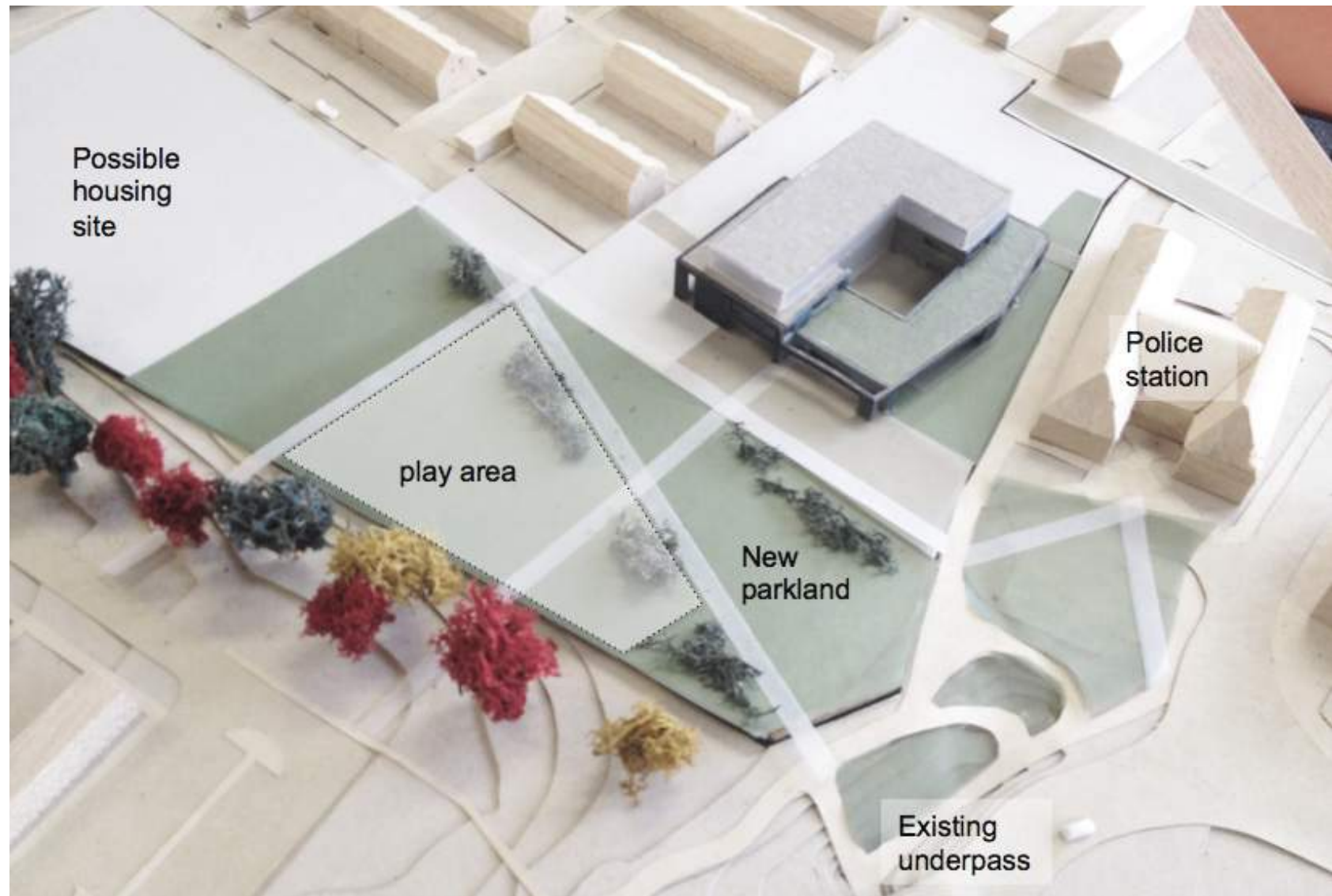


Existing pedestrian pathway

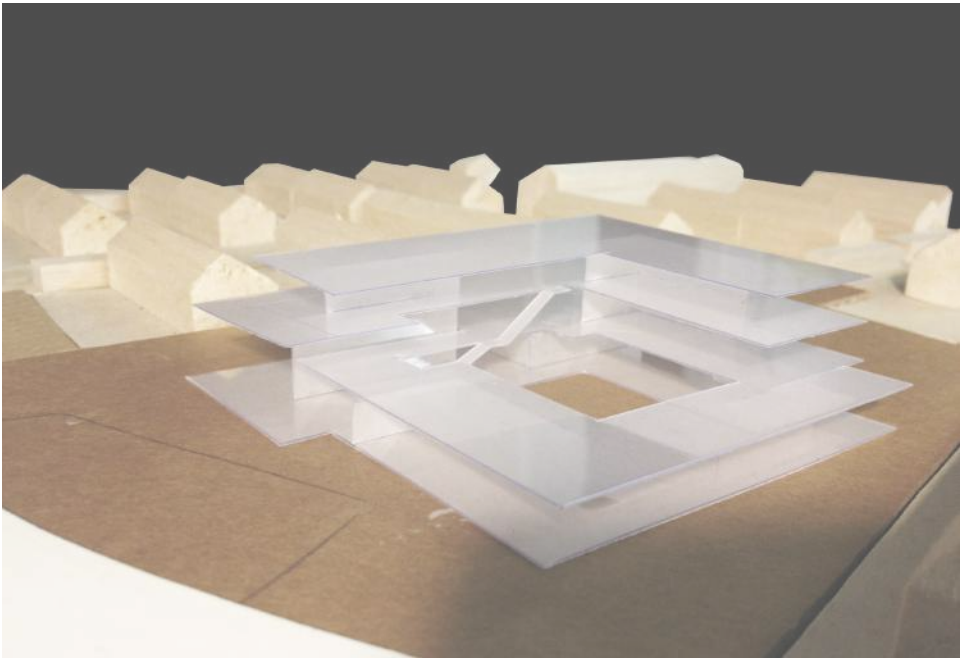
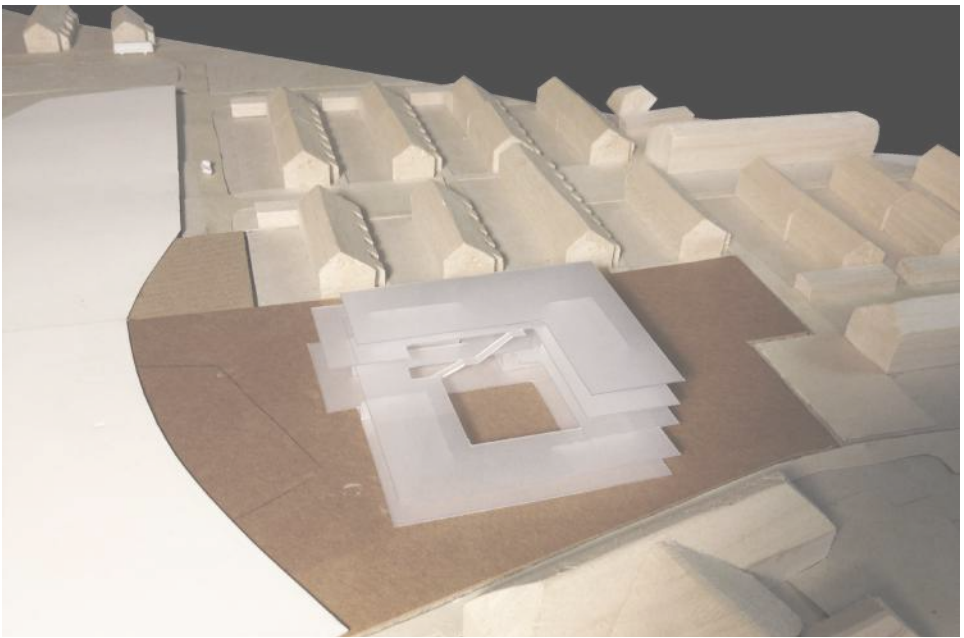
Cumbernauld - Current situation



Interpreting and developing the brief - building arrangement diagrams

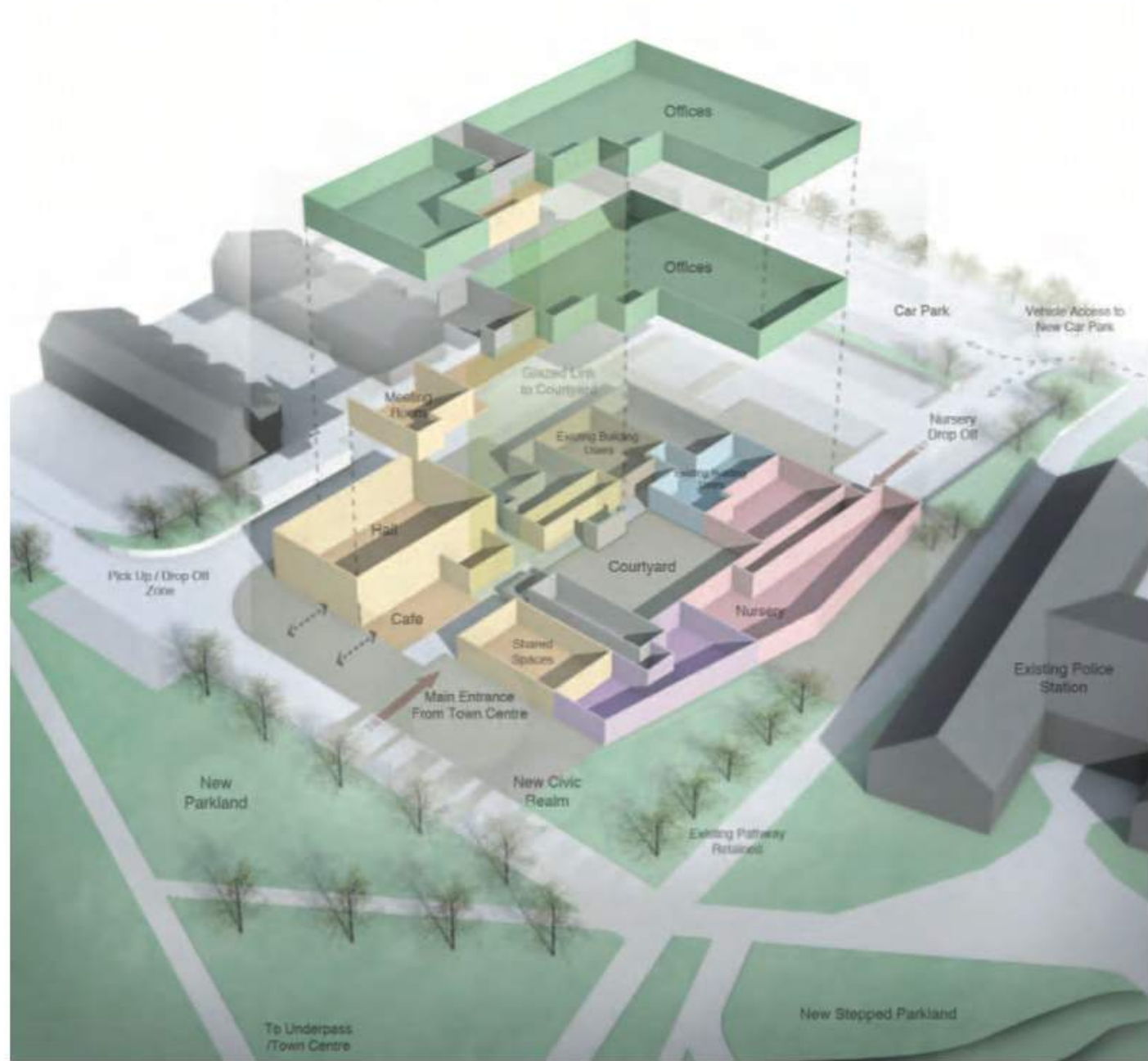


Concept Development - Building in the landscape / Connecting the town centre

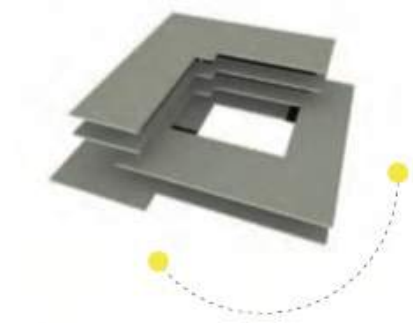


Building Massing - Initial concept models

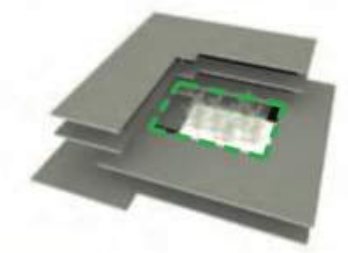




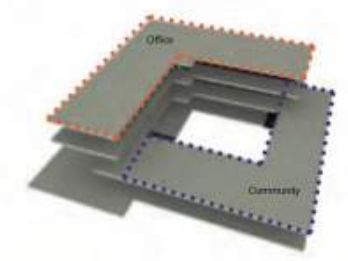
Proposed building arrangement and relationship of spaces



Sun path

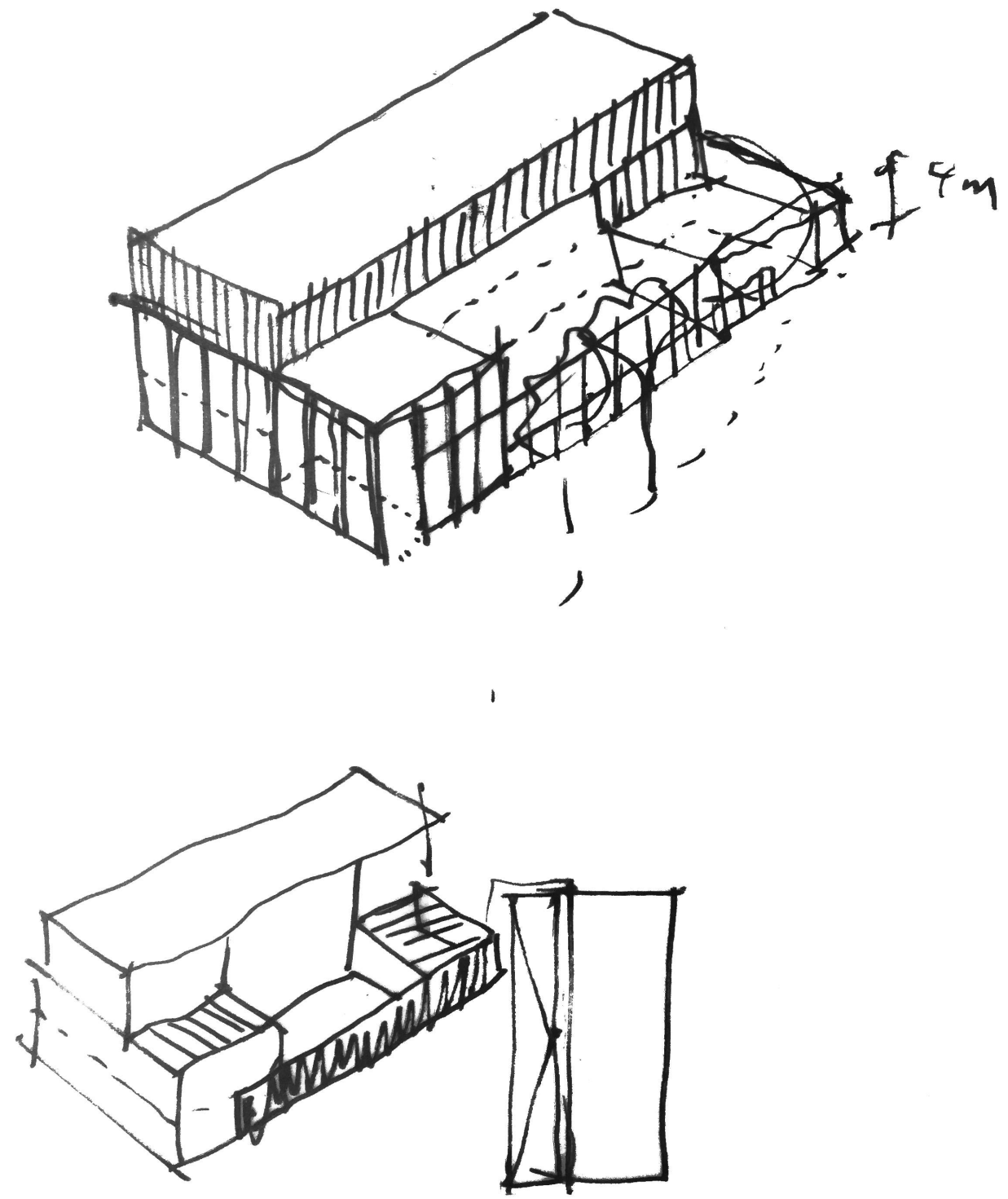


Courtyard

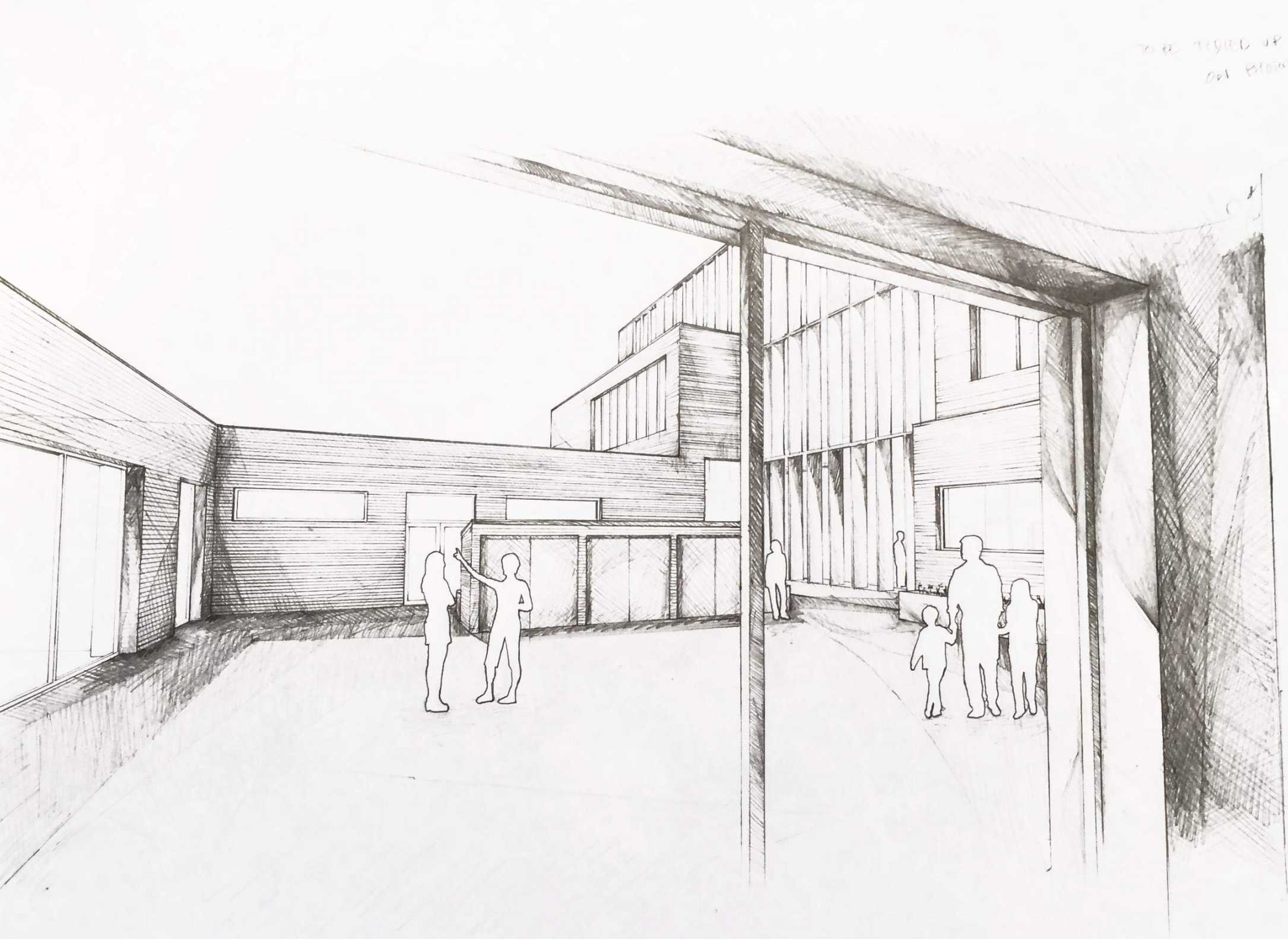


Arrangement

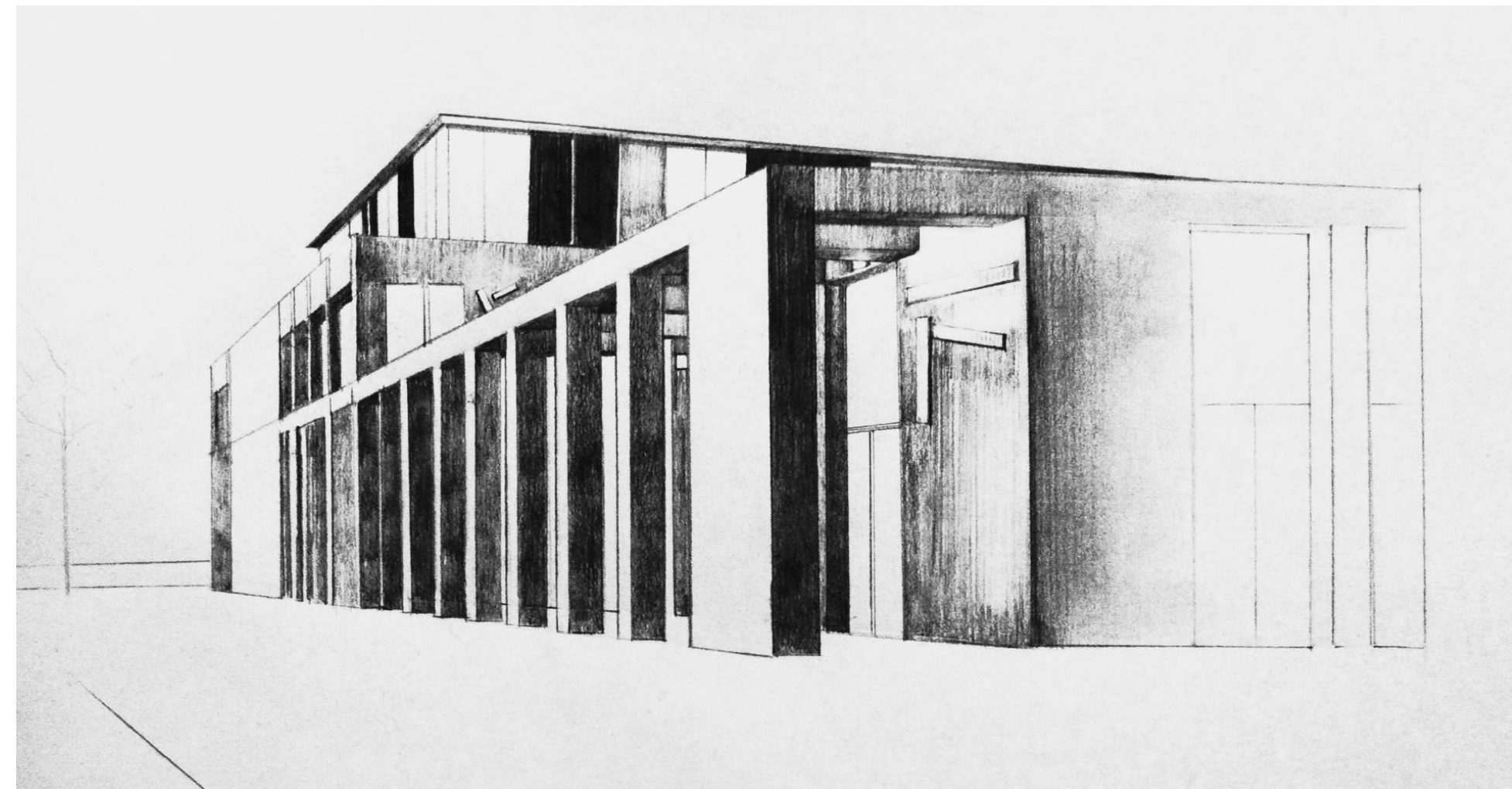
Massing diagrams





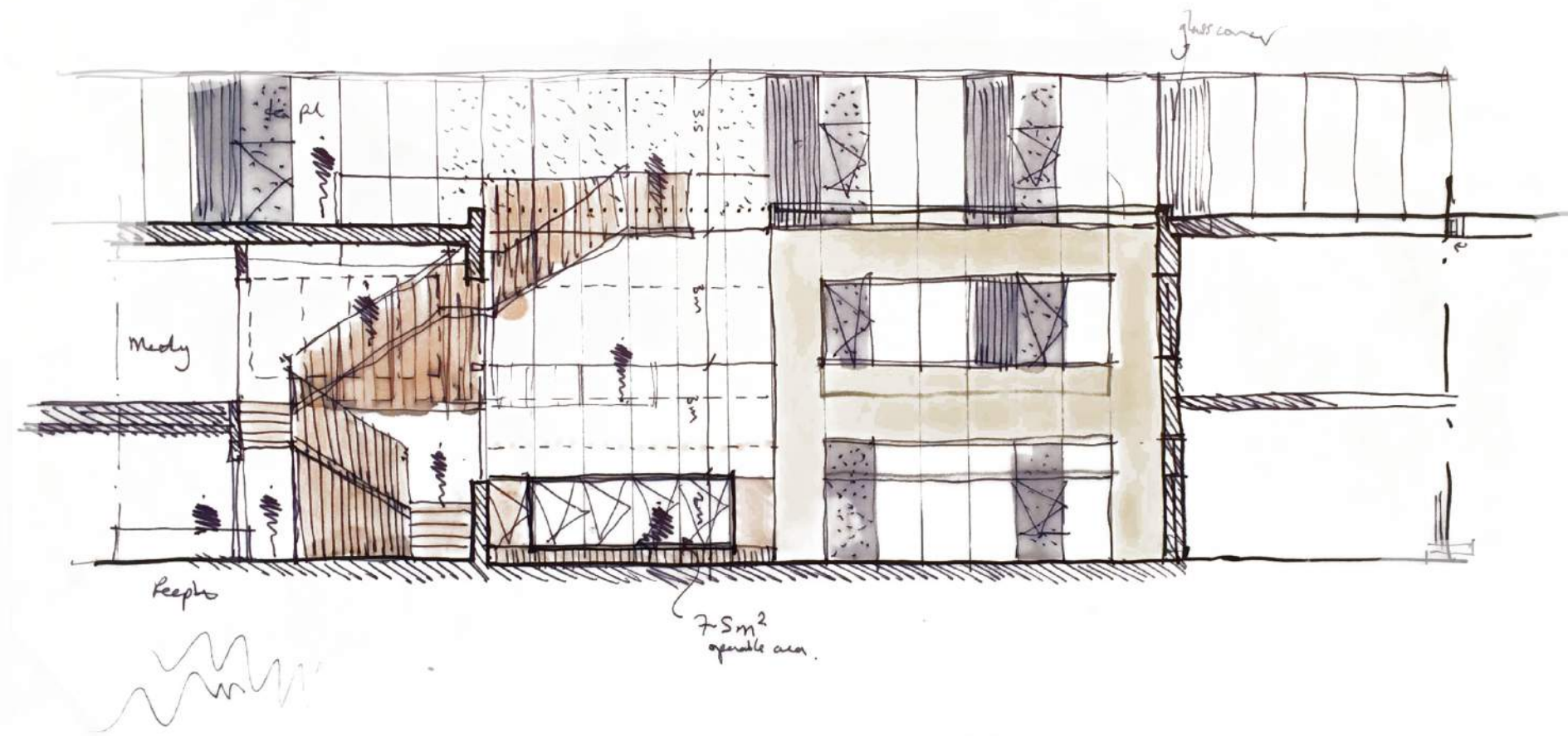


Development sketches - The Courtyard

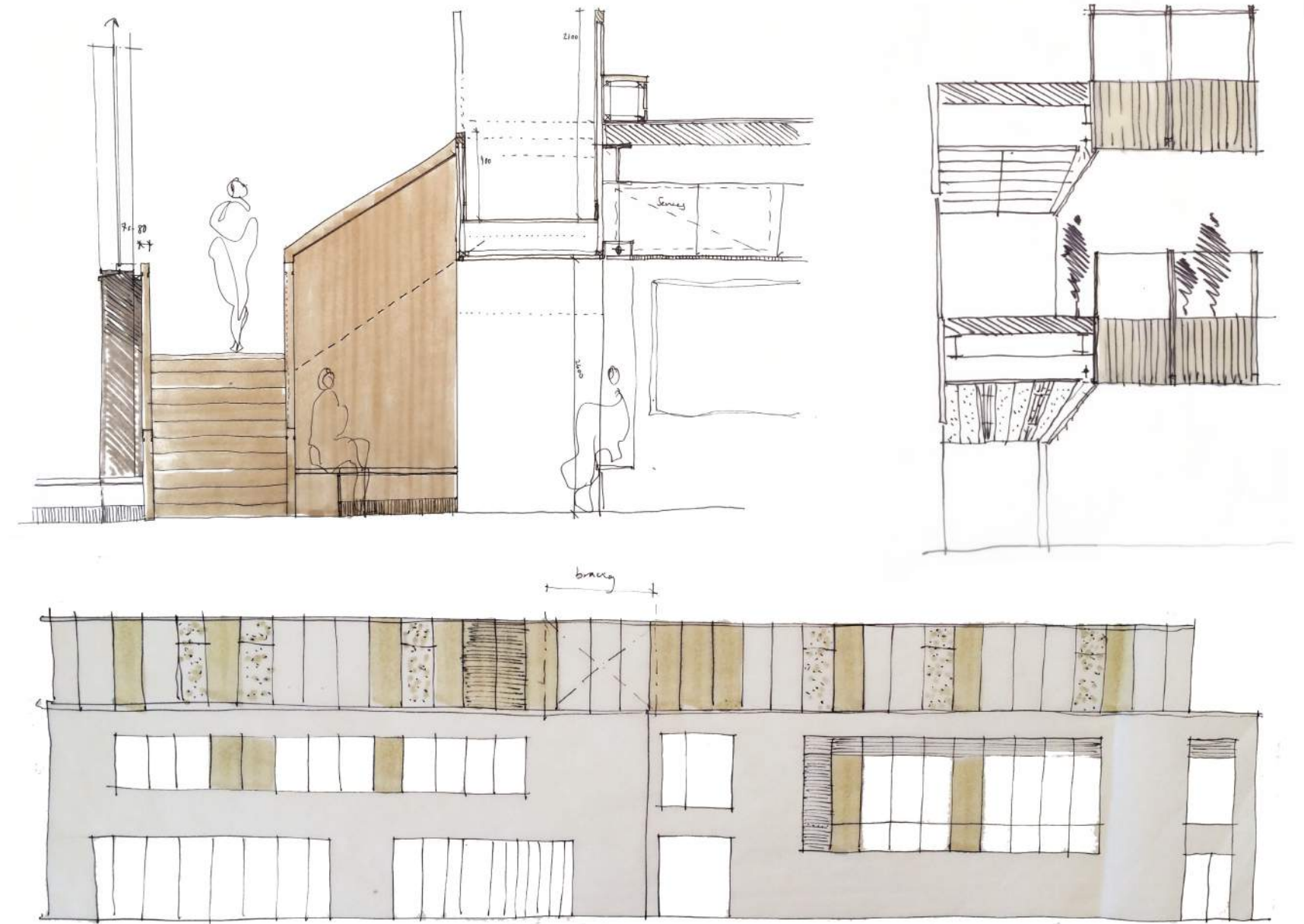


Development sketches - Collonade and entrance





Development sketches - Public space and internal elevations



Development sketches - Stair design and external elevation





Material Palette - Interior



Arts strategy and internal wayfinding





Community consultation event 21st October 2014







*The completed project will provide 1000m<sup>2</sup> of community space, 1000m<sup>2</sup> of office space for social enterprise businesses and groups, an 8000m<sup>2</sup> civic space to include play and multi-use games area for all ages, and new road access and pathways to link the site more closely to the town centre with the aim of increasing its use.*





